

QUAQUANCO

(WAH-WHAN-KOH)

THE QUAQUANCO IS BASED ON THE 3-2 CLAVE.

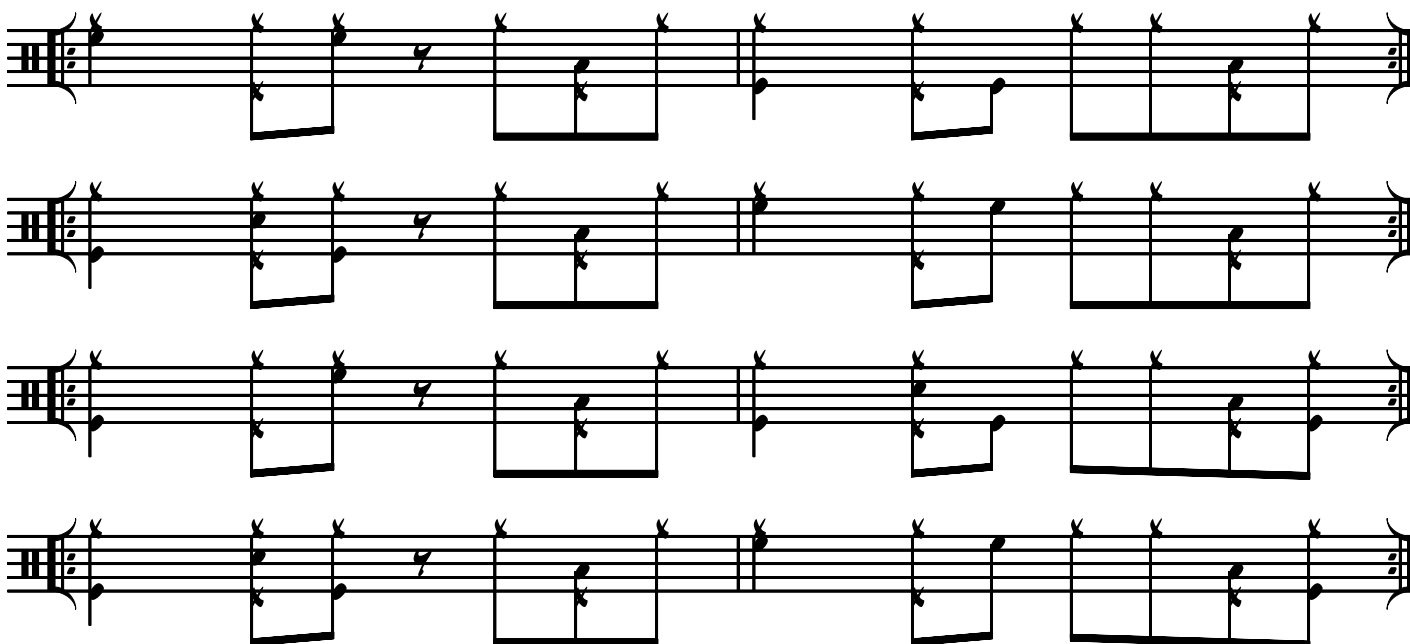
IT IS MADE UP OF THE CASCARA PART PLAYED ON THE RIDE CYMBAL, USUALLY THE BELL,



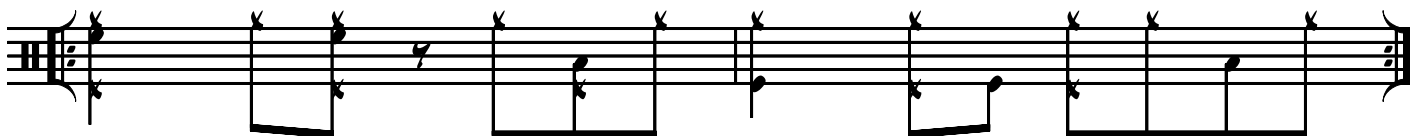
AND THIS DOTTED QUARTER NOTE FIGURE ORCHESTRATED AROUND THE DRUM SET.



THE DOTTED QUARTER NOTE RHYTHM CAN BE ORCHESTRATED AND EMBELLISHED AROUND THE DRUM SET IN DIFFERENT WAYS. HERE ARE SOME EXAMPLES. TRY TO COME UP WITH YOUR OWN.



ONCE YOU ARE COMFORTABLE WITH THESE PATTERNS TRY PLAYING THEM WITH THE 3-2 SON AND RHUMBA CLAVES ON THE HI-HAT. HERE ARE BARS 4 AND 5 WITH THE HI-HAT PLAYING THE 3-2 SON CLAVE.



HERE ARE BARS 4 AND 5 WITH THE HI-HAT PLAYING THE 3-2 RHUMBA CLAVE.

